

Plan 6
Leilighet: BB2-601

BRA: 89,3 m²

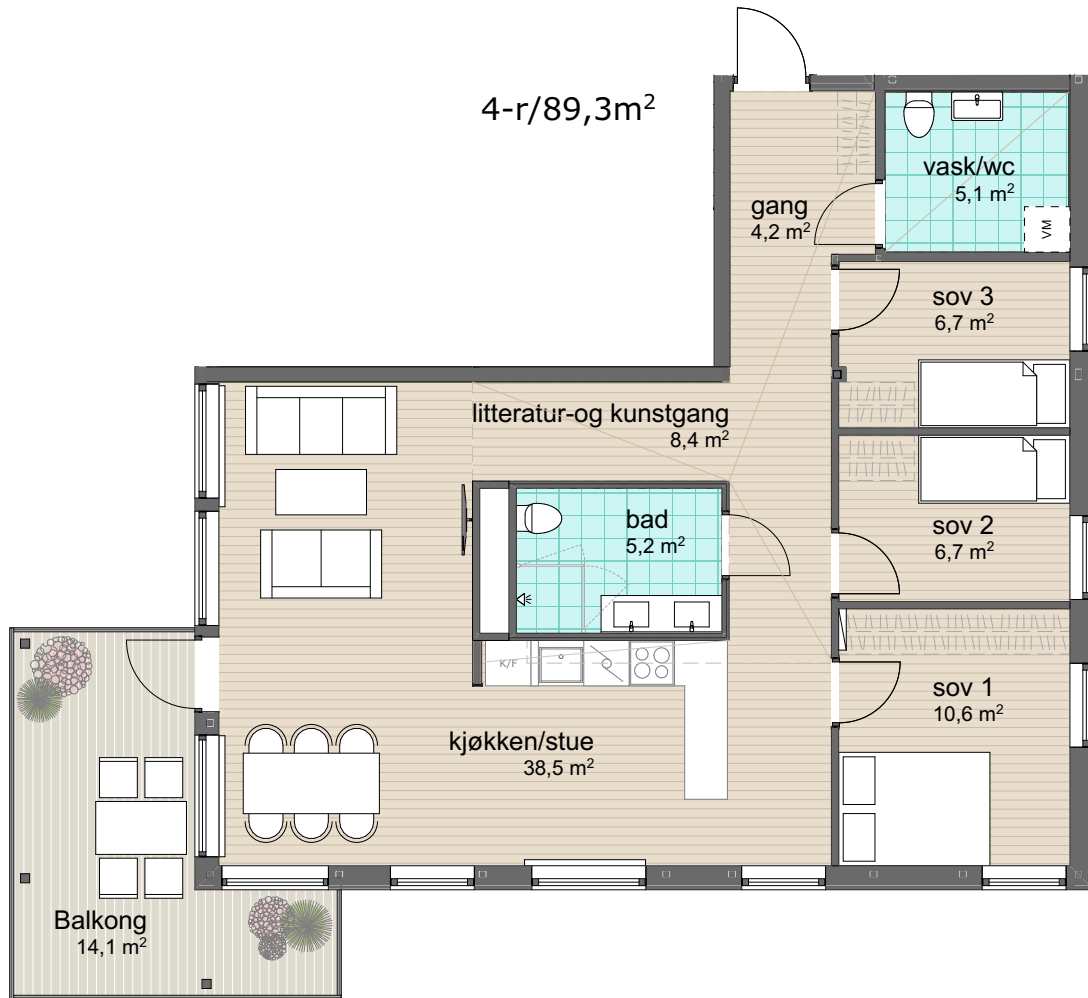
P-rom: 89,3 m²

S-rom:

BRA: areal innenfor leilighetens yttervegg

P-rom: gang, bad, soverom, kjøkken/stue

S-rom:

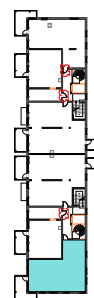


Øvre Steinaunet Felt BB2
Salgstegning

Målestokk: 1:100 (A4)



VOII
vollark.no



Ikke i målestokk