

Plan 6
Leilighet: BB2-605

BRA: 66,6 m²

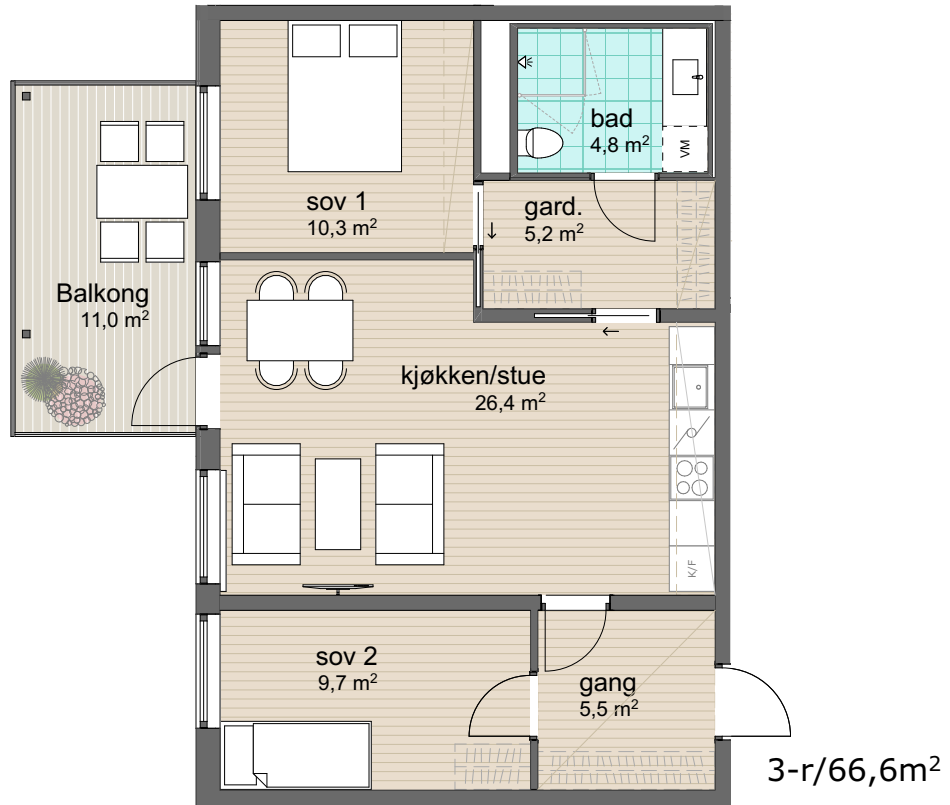
P-rom: 60,2 m²

S-rom: 6,4 m²

BRA: areal innenfor leilighetens yttervegg

P-rom: gang, bad, soverom, kjøkken/stue

S-rom: garderobe

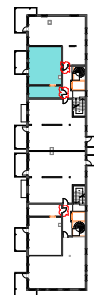


Øvre Steinaunet Felt BB2
Salgstegning

Målestokk: 1:100 (A4)



VOLL
vollark.no



Ikke i målestokk