

Plan 3
Leilighet: H0308

BRA: 78,3 m²

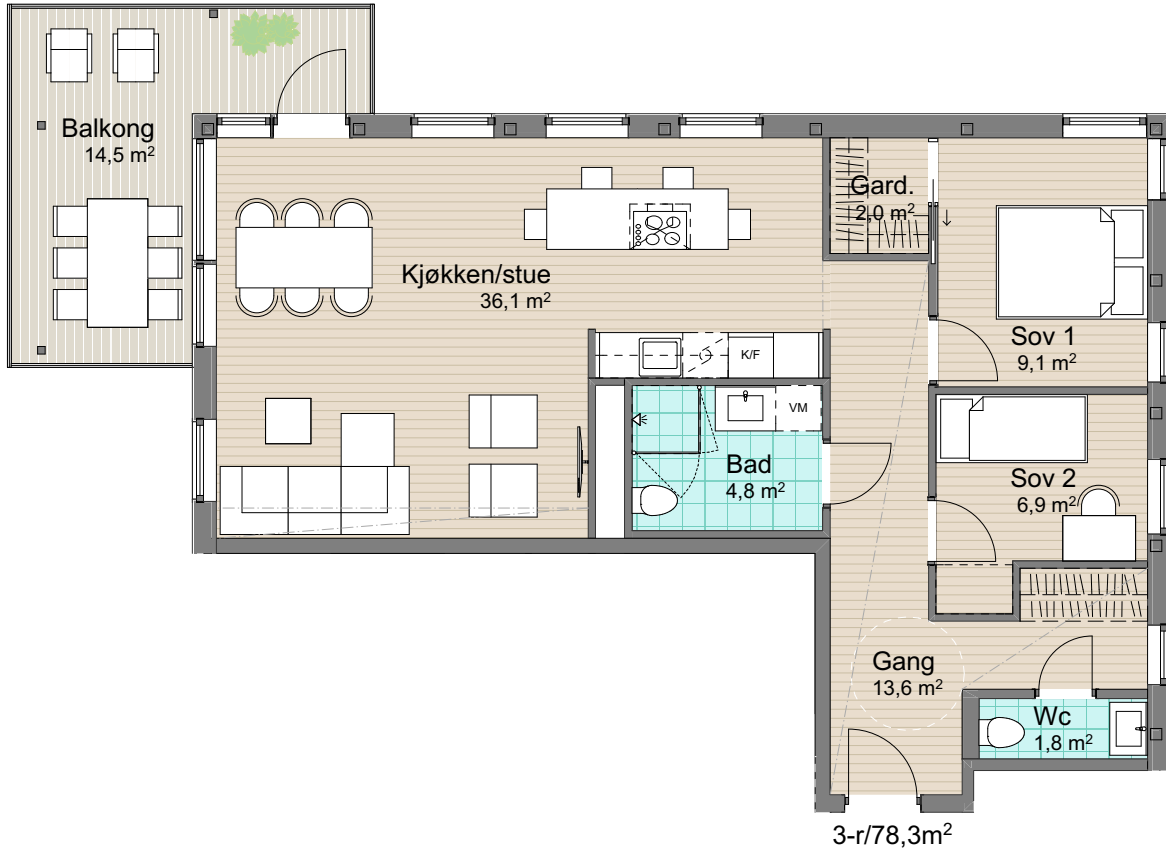
P-rom: 75,8 m²

S-rom: 2,5 m²

BRA: areal innenfor leilighetens yttervegg

P-rom: gang, bad, wc, soverom, kjøkken/stue

S-rom: garderobe



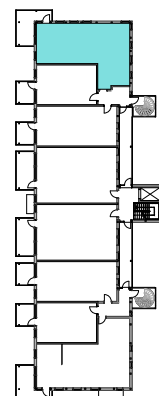
Øvre Steinaunet Felt BB1
Salgstegning

2019.10.15

Målestokk: 1:100 (A4)



VOII
vollark.no



Ikke i målestokk